

# The French Touch<sup>®</sup> The French Touch<sup>®</sup>

Touch screen P.O.S. Terminal



ART  
IN TECHNOLOGY





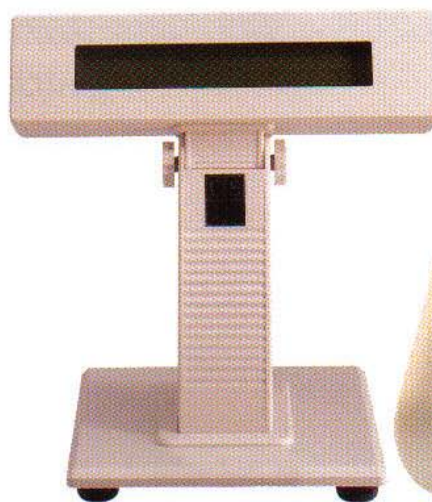
# The French Touch®

## CSI Hand Held Terminal

- ▶ Touch Screen
- ▶ Hand Held Terminal
- ▶ 4 or 8 hand terminals per French Touch®
- ... a mini **French Touch®** in your hand



## Customer Display built in or external



The French Touch® is the result of **CASH SYSTEMES INDUSTRIE'S** experience with 20 000 systems sold in over 20 countries.

**THE FRENCH TOUCH®** brings this experience to you !

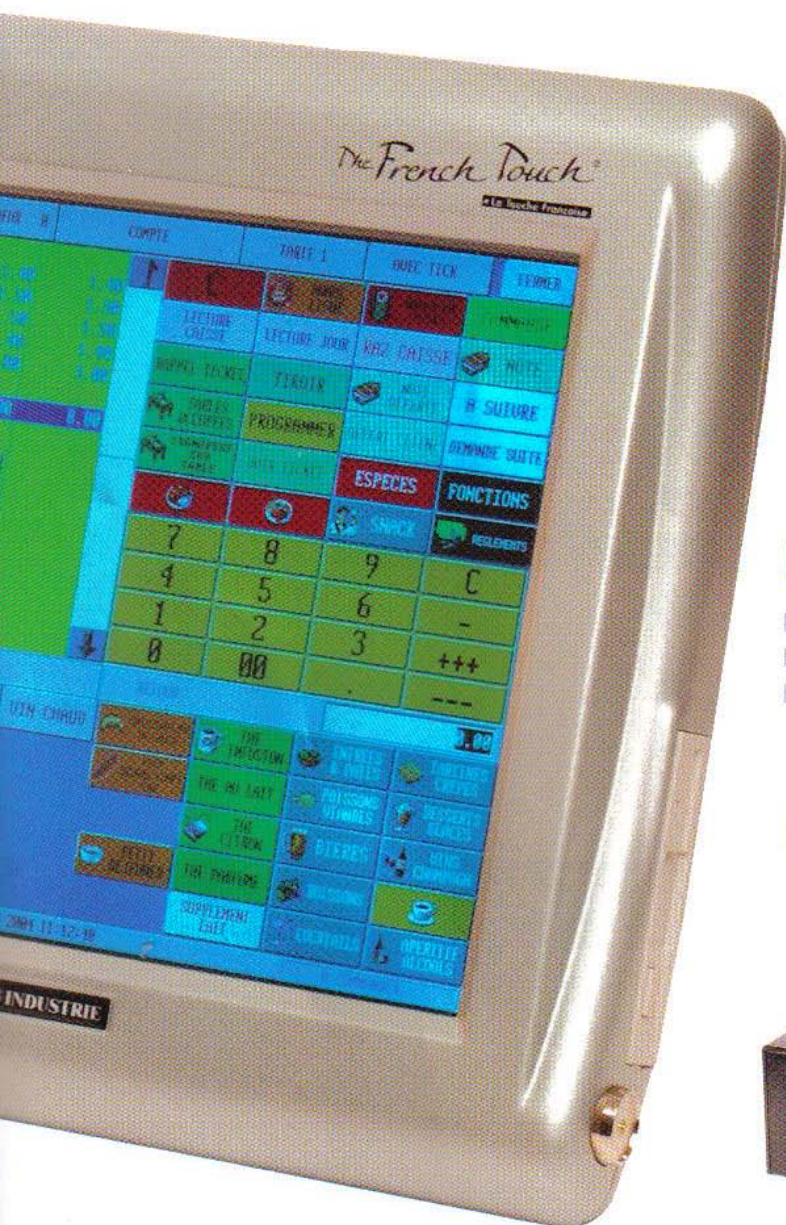
# The French Touch®





# the business partner you can trust !

Keys can be defined and  
icons can be loaded for all articles



## Identification keys for waiters

► Unique configurable **DALLAS** key  
for maximum security



## Receipts

Fully configurable

- Invoices
- pro-formas

## Exceptional image quality

- A perfect image quality thanks to a 15" XGA LVDS monitor
- Easy touch contact
- Configurable colours and contrast

## Cash Drawer connection



## Storage

► The **The French Touch®** is  
equipped with a 3.5"  
floppy drive for backing  
up sales data.



# The French Touch®



## Software

- Ability to connect up to 4 hand held touch screen terminals
- Client accounts control including details on consumption
- Debtors balance control (not detailed)
- Tables control, with room lay out and 2 years reservations
- VAT change for take away
- Service fee by points, degree or set rates
- Simplified stock control
- "à la carte" and menus control with quantity control
- Arrangements (in a menu structure)
- Control of several cash drawers (per waiter, per currency, ...) and wallet control
- Bar code reading
- Remote printers on different production points, for side orders, cooking and comments
- Individual configuration of waiters including access authorisation levels

## Hotel

- Reservations up to 5 years
- Planning, kardex, etc...
- Up to 99 rooms

## Technological environment

- 15" XGA LVDS monitor
- graphic coprocessor
- Power PC microprocessor
- 64 mb back up memory (NO HARD DISK !)
- 64 mb flash memory
- 3 external RS 232 ports
- 1 internal RS 232 port
- 1 internal parallel port
- 1 Ethernet port

## PC software "Esterel Manager" (Optional)

- Full programming from PC to The French Touch by Ethernet
- X- and Z-reports, collecting of sales per article, payments, statistics, VAT rates, waiters and control strip
- X-report can be done manually or automatically at a set moment of the day.
- Configurable printing of the reports on 80 or 40 columns
- Data export to ASCII or dBase (Excel compatible) for analysis or treatment by an accountancy software package or stock control
- Message service to other cash register

## Norms

EN 55022/EN50082-1  
European directive EEC/EMC

External 24V power supply  
(90 - 240V, 47Hz - 67Hz)  
Depth 120 mm - width 400 mm - height 350 mm  
screen in vertical position - Weight 4.1 kg  
Environment from 0°C to 50°C

## Stand alone or in network configuration The French Touch® is innovative

- All ESC/P2 thermal, matrix, or 80 columns printers can be connected

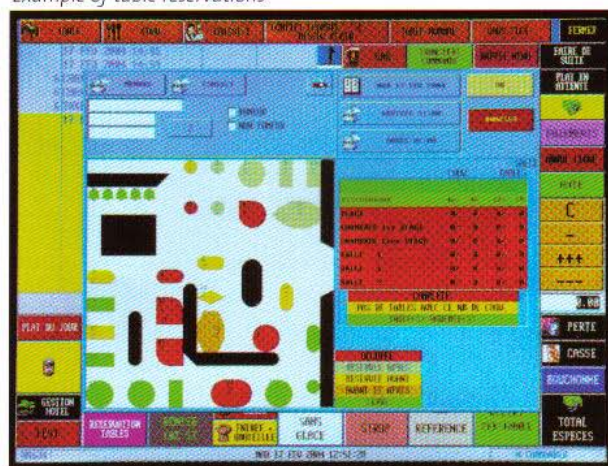


## Items can be configured up to :

- 40 000 articles
- 255 families
- 255 subfamilies
- 255 groups
- 30 payments
- 255 waiters
- 50 discounts or extras

## Protocol available for all stock control software

Example of table reservations



Authorised Dealer



Any time,  
Everywhere,  
Be aware

## CASH SYSTEMES INDUSTRIE

TECHNOPARC EPSILON  
RD 100 - 83700 SAINT-RAPHAËL - FRANCE  
TÉL : +33 4 98 11 45 90 / +33 825 560 615  
FAX : +33 4 98 11 45 70

WEB : [www.cashsystemes.com](http://www.cashsystemes.com)  
E-MAIL : [info@cashsystemes.com](mailto:info@cashsystemes.com)